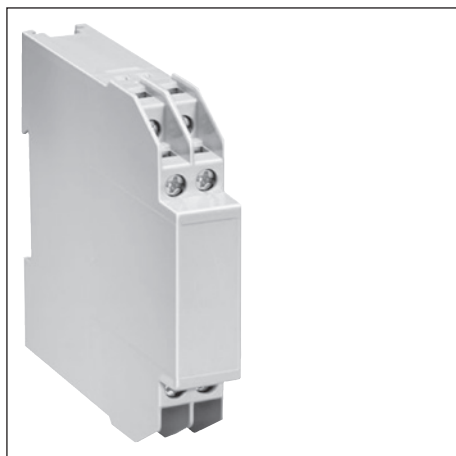
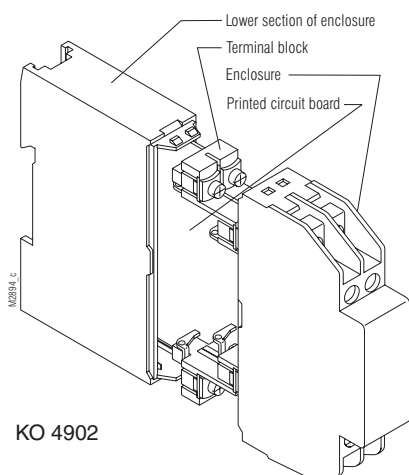
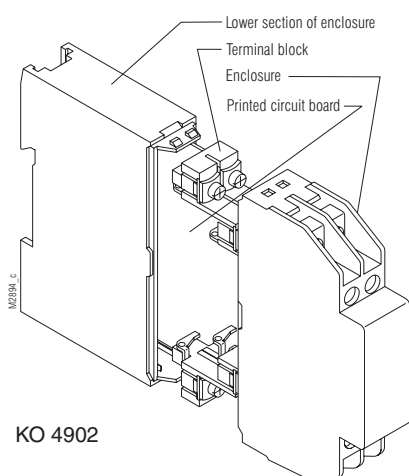


Insulated Enclosure KO 4902

for surface mounting and mounting in cabinets,
with flat terminals



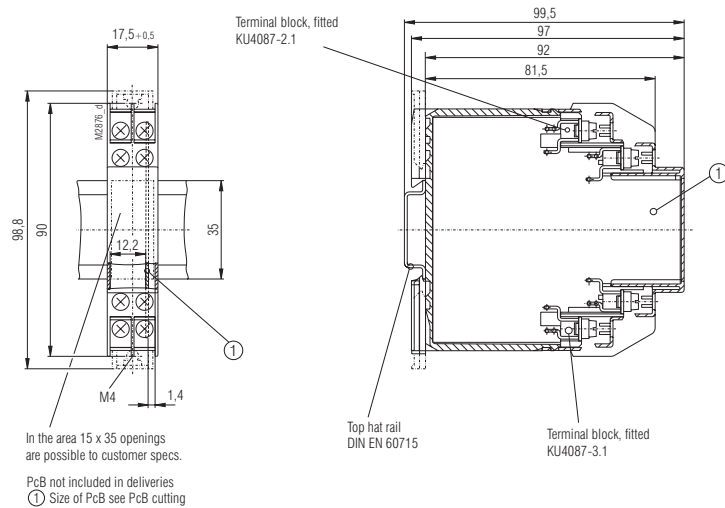
- Width 17.5 mm
- Max. 8 plus-minus terminal screws with self-raising terminal washers
- Reliable connection of max. 2 wires even with different diameter
- Terminal blocks can be machine-soldered additional wire soldering is possible
- Housing supplied as single parts, terminals prefitted in terminal blocks



Technical data

Order reference:	KO 4902.0049365		
Outer dimensions:	17.5 x 90 x 97 mm		
Enclosure material:	PC-GF, light gray RAL 7035		
Temperature stability:			
complying with UL 746 B:		125 °C	
complying with Vicat			
ISO 306	Meth. B:	148 °C	
compl. with ISO 75-2	Meth. A:	138 °C	
	Meth. B:	144 °C	
Max. permitted power dissipation:	5.5 W for stand-alone enclosure at normal climate 23/50-1		ISO 554
Specific thermal resistance:	R _{th} = 8 K / W for stand-alone enclosure		
Flame retardancy			
complying with UL 94:	V-0		
complying with IEC 60 707:	BH 2-30		
Number of terminals:	8, < 8 on request		
Terminal material:	Steel strip, tin-plated		
Max. cross section for connection:	2 x 2.5 mm ² solid 2 x 1.5 mm ² stranded ferruled min. Ø 0,1 mm solid		DIN 46 228-1/-2/-3/-4
Insulation of wires length:	9 - 10 mm		
Max. contact resistance to printed circuit board:	20 mΩ		
Max. current carrying capacity:	16 A, 40 A on request		
Wire fastening:	Captive plus-minus terminal screws (M3.5) with self-raising terminal washers Function complying with		IEC 60 999-1
Torque:	max. 0.8 Nm		
Inner connection:	Machine-solderable terminal pins for printed circuit board and soldering pin for strands		
Enclosure fastener:	1) Snap-on fastener on top hat rail 2) Screw fastening M4, grid 90 mm with second clip as accessory		EN 50 022
Creepage current resistance:	CTI 175 ≙ insulating material III a		IEC 60 664-1
Air gap and creepage distances			IEC 60 664-1
Enclosure for vertical printed circuit board:	Air gap ≥ 4 mm Creepage distance ≥ 6.3 mm		
Type of protection			IEC 60 529
Enclosure:	IP 40		
Terminal opening:	IP 20		
	Contact protection complies with VBG 4		
Print area:	17 x 44 mm		
Printed circuit board:	See Printed circuit board design		
Printed circuit board holder:	Guide ribs		
Component installation height for a vertical printed circuit board			
on component side:	≤ 12.2 mm or 11.6 mm		
on soldering side:	≤ 2.0 mm or 1.4 mm (see Printed circuit board design)		
Net weight:	72 g		
Accessories:			
ET 4086-0-2.1	Second clip for screw fastening		
KU 4089-0-2:	Blanking plug for enclosure base		
KU 4089-3-4	Blanking plug for terminal block		
KU 4087-1-1	Dummy terminal block for vertical PCB		

Dimension drawings



Printed circuit board design

