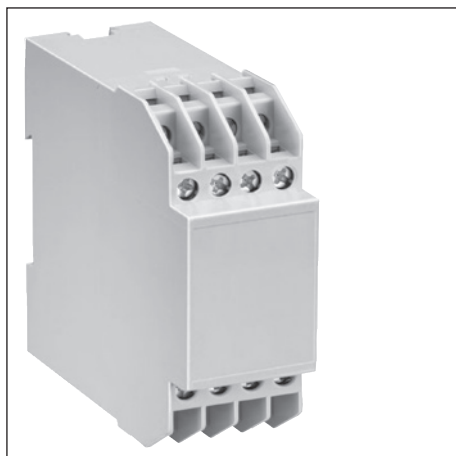
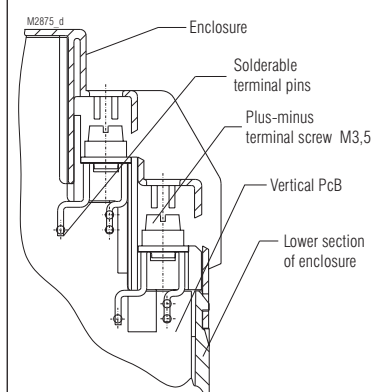


Insulated Enclosure KO 4903

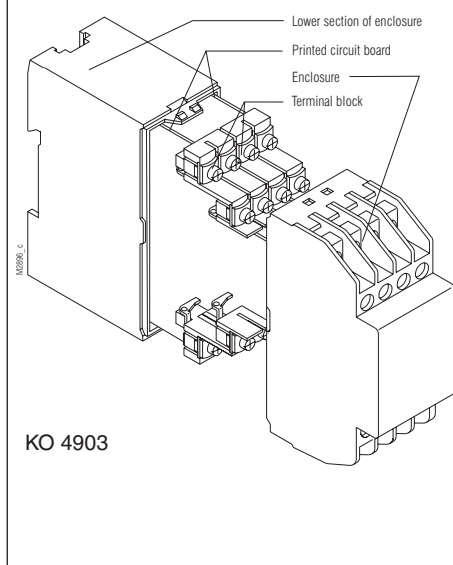
for surface mounting and mounting in cabinets,
with flat terminals



- Width 35 mm
- Max. 16 plus-minus terminal screws with self-raising terminal washers
- Reliable connection of max. 2 wires even with different diameter
- Terminal blocks can be machine-soldered additional wire soldering is possible
- Housing supplied as single parts, terminals prefitted in terminal blocks



Flat terminals for solder connection

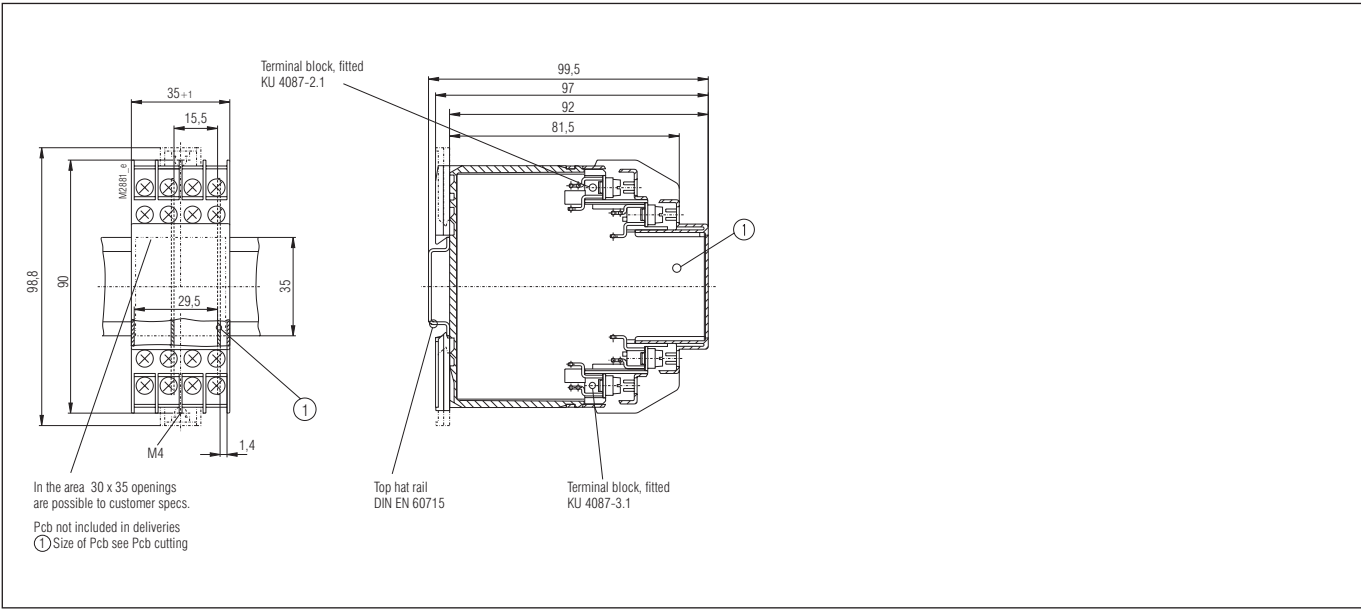


KO 4903

Technical data

| | | | |
|--|--|--|-----------------------|
| Order reference: | KO 4903.0049467 | | |
| Outer dimensions: | 35 x 90 x 97 mm | | |
| Enclosure material: | PC-GF, light gray RAL 7035 | | |
| Temperature stability: | | | |
| complying with UL 746 B: | 125 °C | | |
| complying with Vicat | | | |
| ISO 306 Meth. B: | 148 °C | | |
| compl. with ISO 75-2 Meth. A: | 138 °C | | |
| Meth. B: | 144 °C | | |
| Max. permitted power dissipation: | 9 W for stand-alone enclosure at normal climate 23/50-1 | | ISO 554 |
| Specific thermal resistance: | R _{th} = 6 K / W for stand-alone enclosure | | |
| Flame retardancy | V-0 | | |
| complying with UL 94: | BH 2-30 | | |
| complying with IEC 60 707: | | | |
| Number of terminals: | 16, < 16 on request | | |
| Terminal material: | Steel strip, tin-plated | | |
| Max. cross section for connection: | 2 x 2.5 mm ² solid 2 x 1.5 mm ² stranded ferruled min. Ø 0,1mm solid | | DIN 46 228-1/-2/-3/-4 |
| Insulation of wires length: | 9 - 10 mm | | |
| Max. contact resistance to printed circuit board: | 20 mΩ | | |
| Max. current carrying capacity: | 16 A, 40 A on request | | |
| Wire fastening: | Captive plus-minus terminal screws (M3.5) with self-raising terminal washers Function complying with IEC 60 999-1 | | |
| Torque: | max. 0.8 Nm | | |
| Inner connection: | Machine-solderable terminal pins for printed circuit board and soldering pin for strands | | |
| Housing fastener: | 1) Snap-on fastener on top hat rail 2) Screw fastening M4, grid 90 mm with second clip as accessory | | EN 50 022 |
| Creepage current resistance: | CTI 175 ≙ insulating material III a | | IEC 60 664-1 |
| Air gap and creepage distances | | | |
| Housing for vertical printed circuit board: | Air gap ≥ 4 mm Creepage distance ≥ 6,3 mm | | IEC 60 664-1 |
| Type of protection | | | |
| Enclosure: | IP 40 | | IEC 60 529 |
| Terminal opening: | IP 20 | | |
| | Contact protection complies with VBG 4 | | |
| Print area: | 35 x 44 mm | | |
| Printed circuit board: | See Printed circuit board design | | |
| Printed circuit board holder: | Guide ribs | | |
| Component installation height for a vertical printed circuit board | | | |
| on component side: | ≤ 29 mm | | |
| on soldering side: | ≤ 2.0 mm bzw. 1.6 mm (see Printed circuit board design) | | |
| Net weight: | 130 g | | |
| Accessories: | | | |
| ET 4086-0-2.1 | Second clip for screw fastening | | |
| KU 4089-0-2 | Blanking plug for enclosure base | | |
| KU 4089-3-4 | Blanking plug for terminal block | | |
| KU 4087-1-1 | Dummy terminal block for vertical PCB | | |

Dimension



Printed circuit board design

